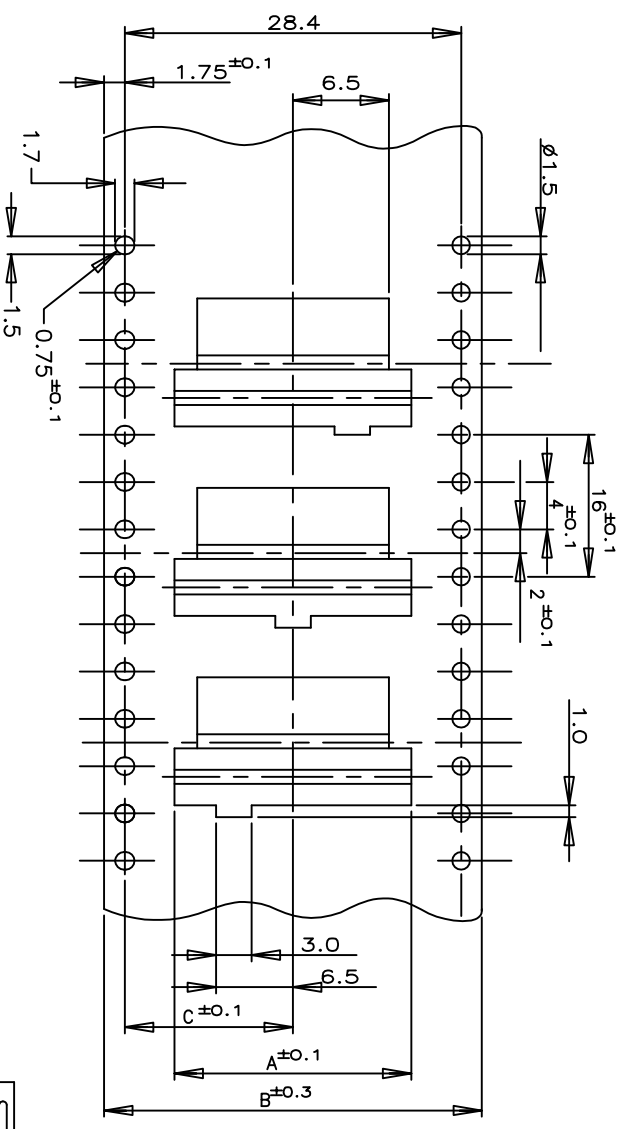
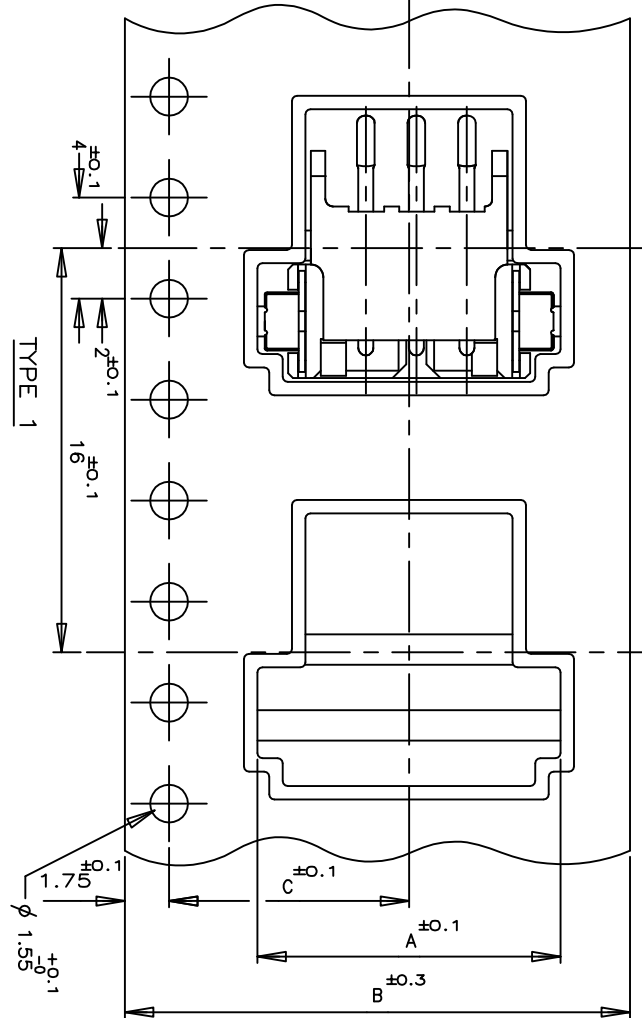
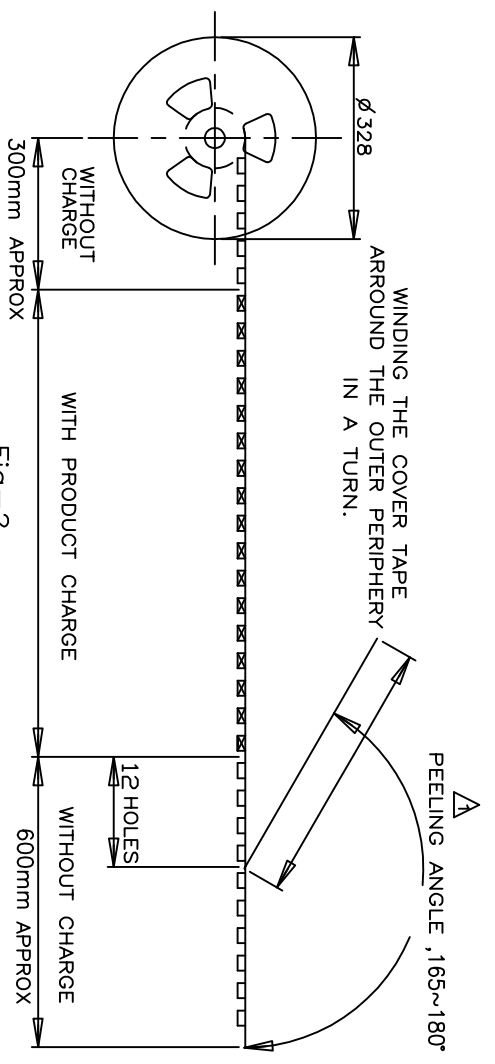
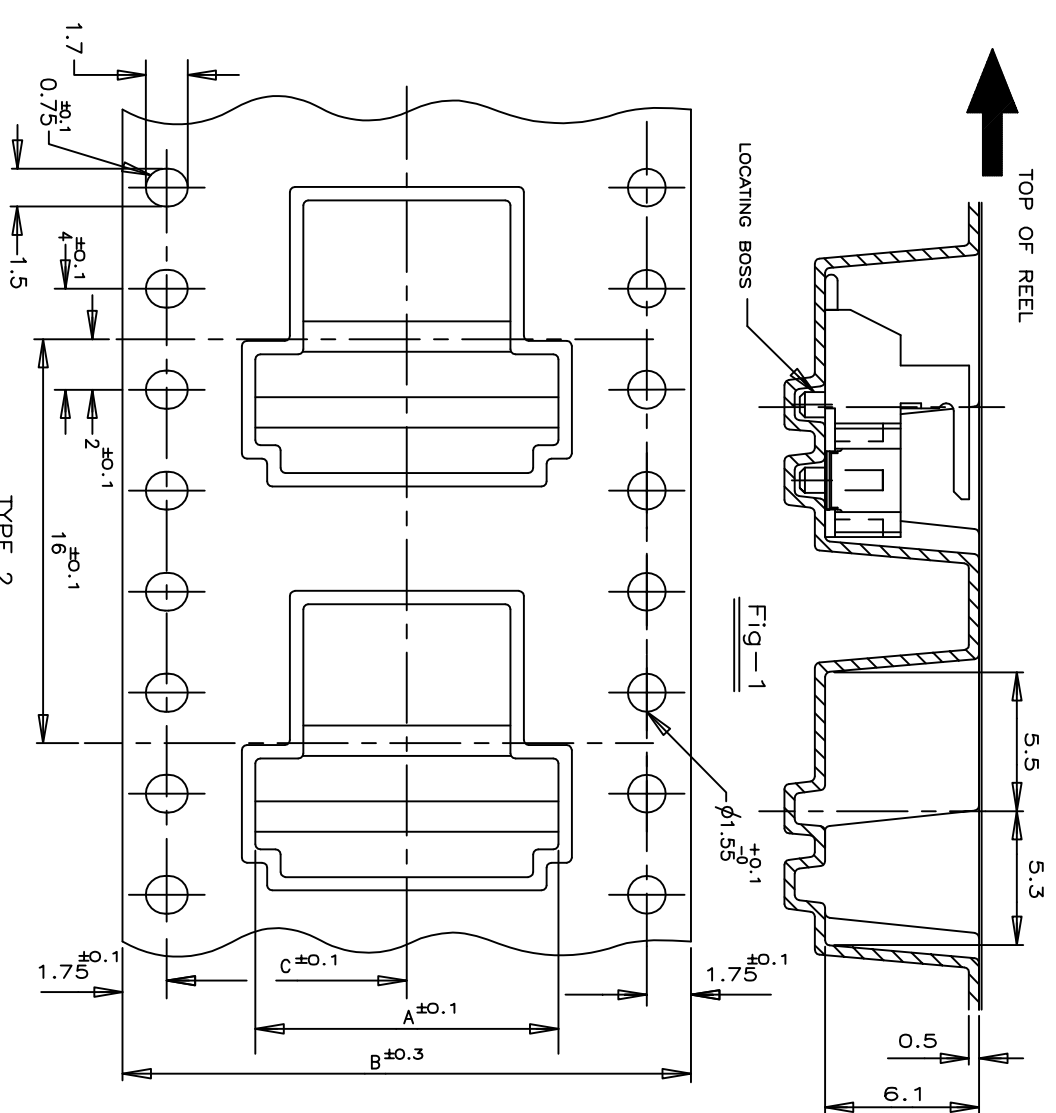
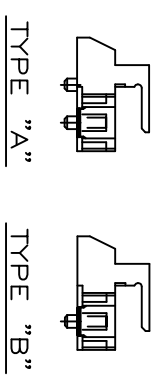


THIS DRAWING IS A CONTROLLED DOCUMENT.

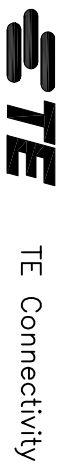
Loc	DIST	REVISIONS		DATE	DWN	APVD
ES	00	P	LTR	DESCRIPTION	24OCT11	C.Z S.Y
		C3		REVISED ECR-11-021545		



TYPE 3 FOR 7P ONLY
THREE KINDS OF DIFFERENT POCKETS AS 1 SET
USED FOR 7P ONLY



WITH	BLACK		NATURAL		TAPING P/N
	TYPE 1	TYPE 2	TYPE 1	TYPE 2	
11.5	24	10	2	1	-2
20.2	44	24	9	0	-9
20.2	44	24	8	0	-8
14.2	32	20	7	1	-7
14.2	32	20	6	1	-6
11.5	24	16	5	1	-5
11.5	24	16	4	1	-4
11.5	24	16	3	1	-3
14.2	32	18	6	0	-6
14.2	32	20	7	0	-7
11.5	24	16	5	0	-5
11.5	24	16	4	0	-4
11.5	24	16	3	0	-3



ON TAPING (EMBOSS)
TE CT CONNECTOR POST HEADER ASS'Y
(BOX-H SMT TYPE W/BOSS & TAIL)

DWN	21SEP10	JACK HOU
CHK	21SEP10	MARTIN LI
APVD	21SEP10	STEVEN YAO

NAME	SIZE	CAGE CODE	DRAWING NO	RESTRICTED TO
TE CT CONNECTOR POST HEADER ASS'Y (BOX-H SMT TYPE W/BOSS & TAIL)	A3	00779	292173	

TOLERANCE UNLESS OTHERWISE SPECIFIED:	±0.2
10>±	±0.25
30>±	±0.3
100>±	±0.3
ANGLE	±3°

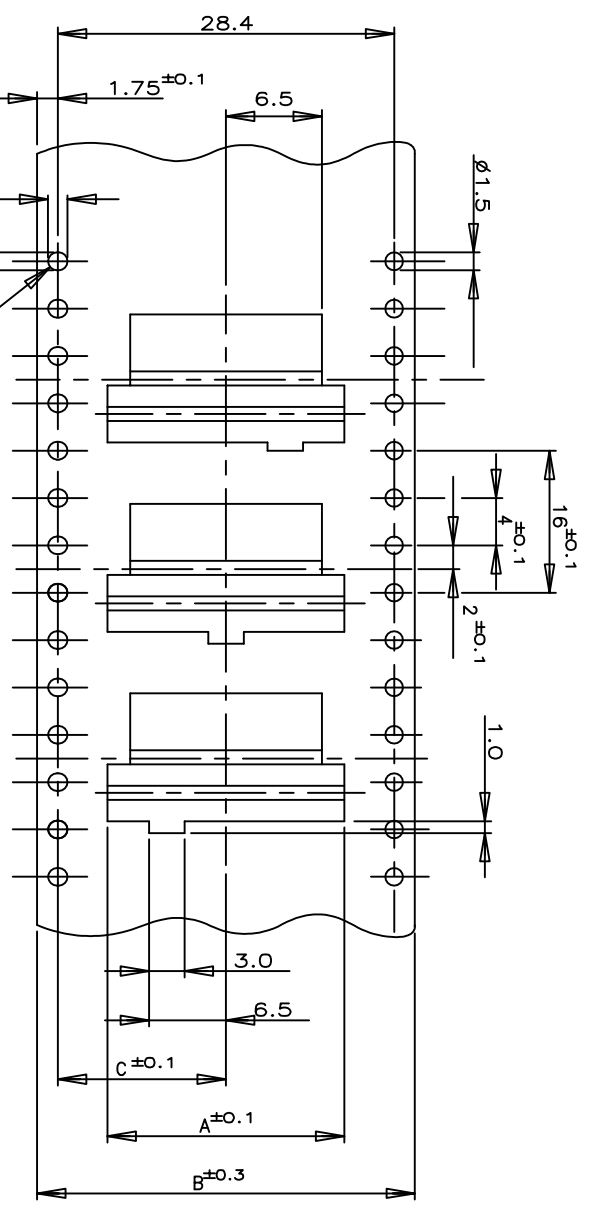
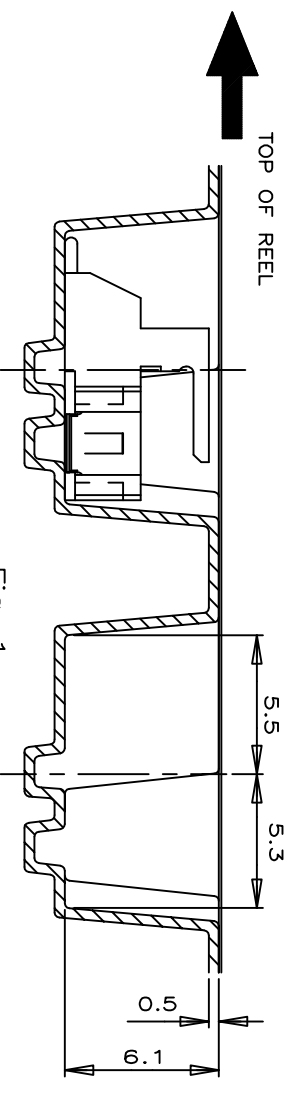
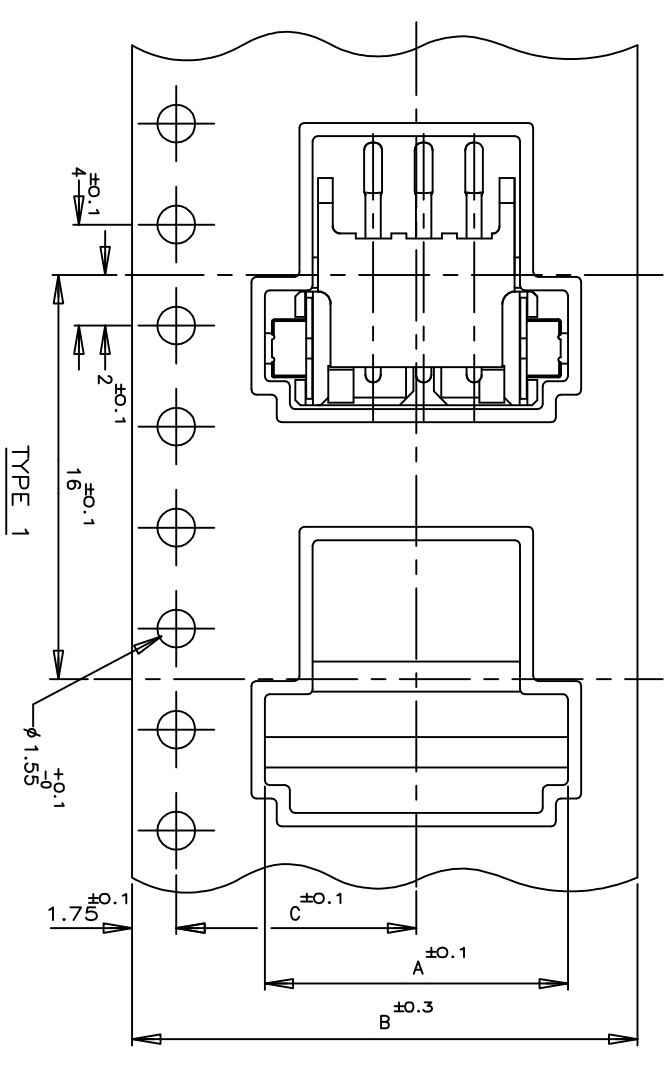
NOTES:
▲ PEELING RESISTANCE : 0.196N-0.686N (20gf-70gf)
SPEED : 300mm/min

4

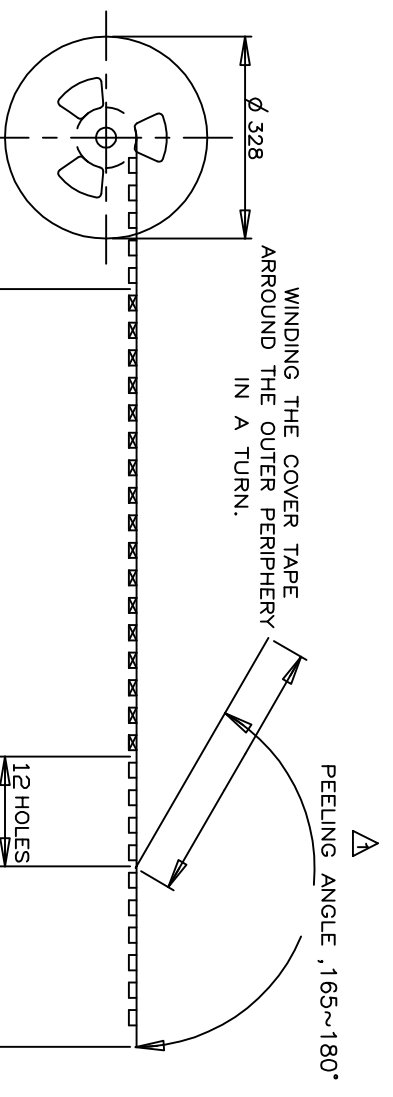
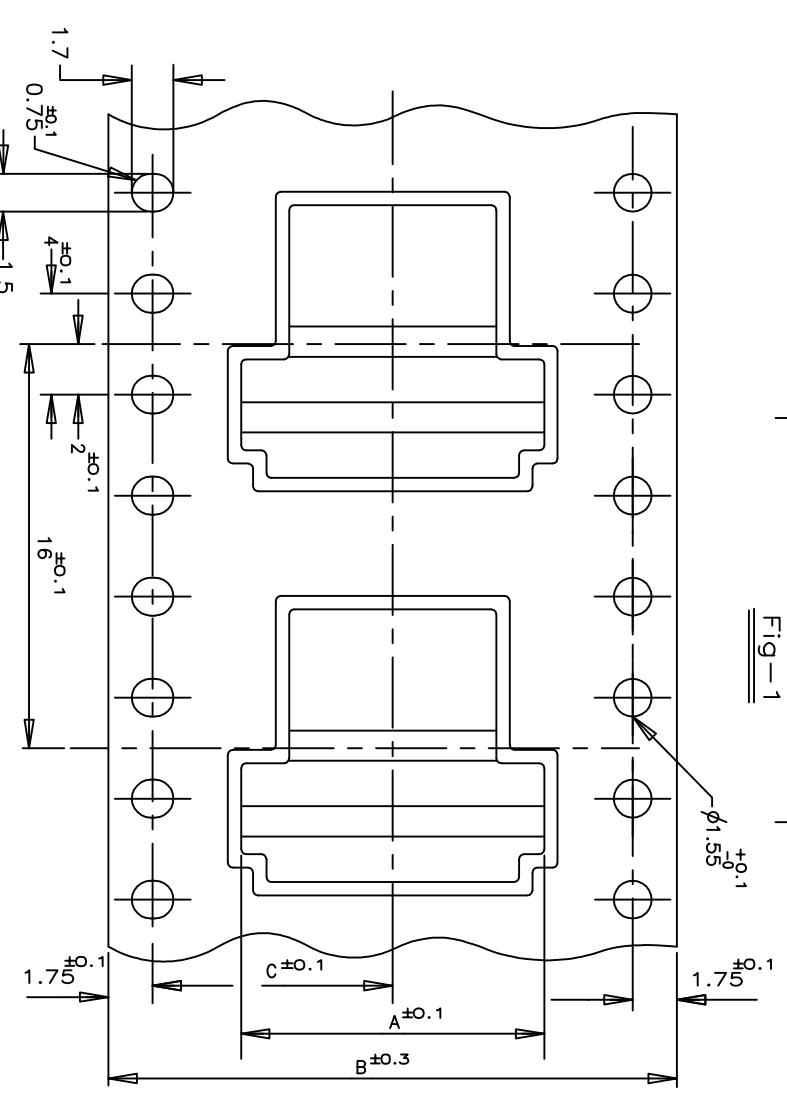
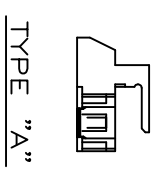
3

2

1



TYPE 3 FOR 7P ONLY
THREE KINDS OF DIFFERENT POCKETS AS 1 SET
USED FOR 7P ONLY



TYPE 2

NOTES:

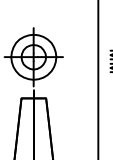
△ PEELING RESISTANCE : 0.196N-0.686N (20gf-70gf)
SPEED : 300mm/min

TOLERANCE UNLESS OTHERWISE SPECIFIED:
10>* :±0.2
30>* :±0.25
100>* :±0.3
ANGLE :±3°

1470-19 (3/11)

THIS DRAWING IS A CONTROLLED DOCUMENT.

DIMENSIONS:	TOLERANCES UNLESS OTHERWISE SPECIFIED:
MM	



MATERIAL	FINISH



TE Connectivity

ON TAPING (EMBOSS)

TE CT CONNECTOR POST HEADER ASS'Y
(BOX-H SMT TYPE W/O BOSS & W/ TAIL)

SIZE A3
CAGE CODE 00779
DRAWING NO. 292173

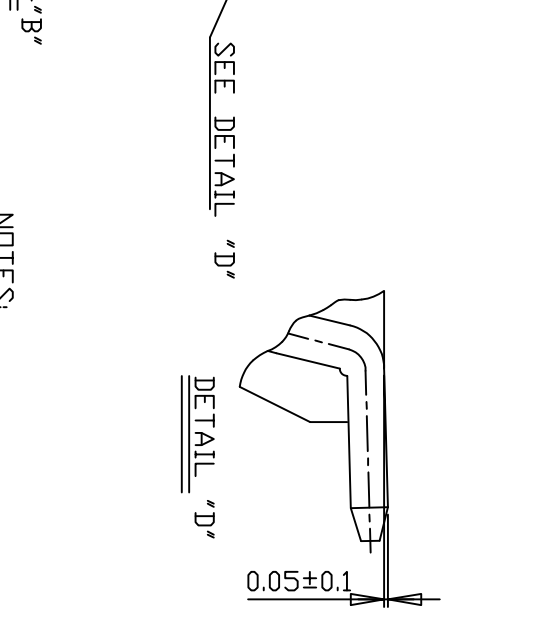
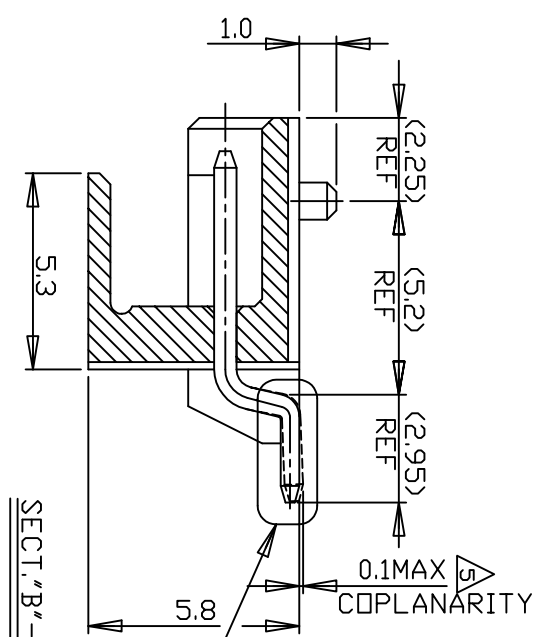
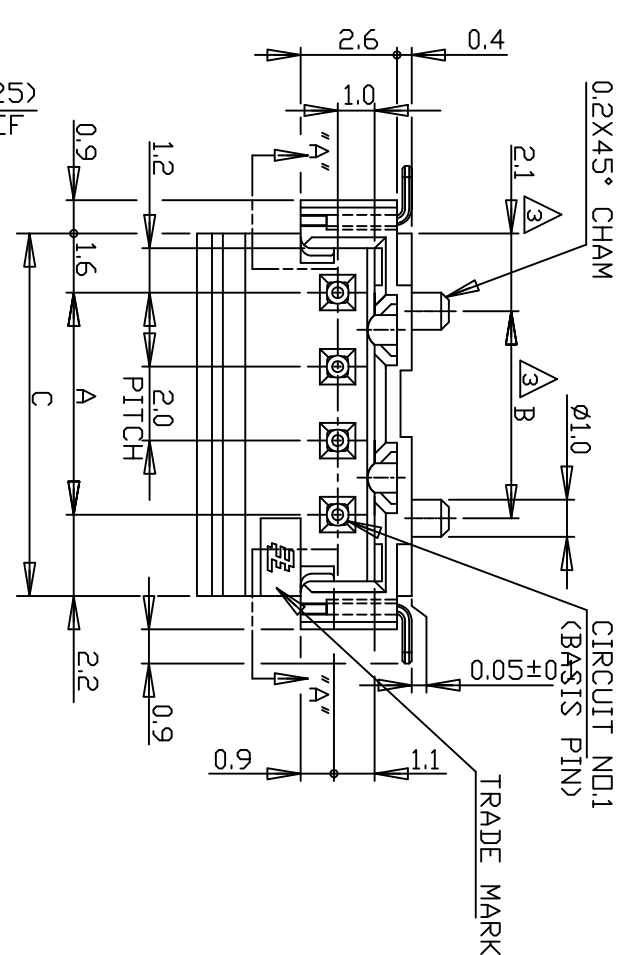
CUSTOMER DRAWING

SCALE 1:1

SHEET 2 OF 6
REV C3

COLOR	WITH	TYPE	BLACK		NATURAL		QTY/ REEL	Pos	TAPING P/N
			PLATE	TYPE	PLATE	TYPE			
		TYPE 2	A	20.2	44	24	500	9	3-292173-9
		TYPE 3	A	20.2	44	22	500	8	3-292173-8
		TYPE 2	A	14.2	32	18	500	7	3-292173-7
		TYPE 3	A	14.2	32	16	500	6	3-292173-6
		TYPE 2	A	11.5	24	14	500	5	3-292173-5
		TYPE 3	A	11.5	24	12	500	4	3-292173-4
		TYPE 2	A	11.5	24	10	500	3	3-292173-3
		TYPE 3	A	11.5	24	10	500	2	3-292173-2
		TYPE 2	A	20.2	44	24	500	9	2-292173-9
		TYPE 3	A	20.2	44	22	500	8	2-292173-8
		TYPE 2	A	14.2	32	18	500	7	2-292173-7
		TYPE 3	A	14.2	32	16	500	6	2-292173-6
		TYPE 2	A	11.5	24	16	500	5	2-292173-5
		TYPE 3	A	11.5	24	14	500	4	2-292173-4
		TYPE 2	A	11.5	24	12	500	3	2-292173-3

Loc	DIST	REVISONS		DATE	DWN	APVD
ES	00	P	LTR	DESCRIPTION		
		-	-	SEE SHEET 1	-	-



NOTES:
 1. MATERIAL:HSG-6T PKG.F.30%XUL94V-0)
 COLOR:BLACK,NATURAL
 POST: TIN BRASS
 TAIL: TIN BRASS
 OCCUPANT AREA DN PC BOARD
 4P&ABOVE PDS.
 2P&3P

TO BE MEASURED WITH CONNECTOR PLACED
 ON HORIZONTAL DATUM SURFACE, FLAT OF
 SOLDER TINE AND TAIL FRDM DATUM
 SURFACE IS 0.1mm MAX

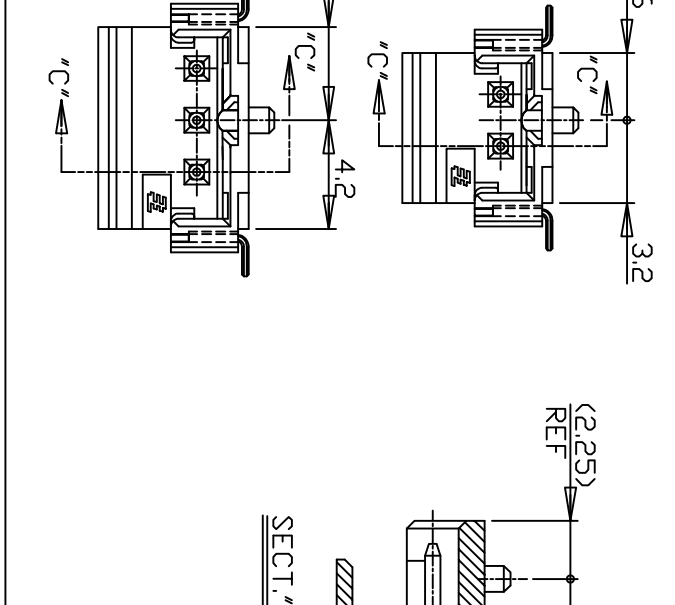
A	B	C	D	POS.	NATURAL	BLACK
16.0	15.6	19.8	22.0	9	1-292173-9	292173-9
14.0	13.6	17.8	20.0	8	1-8	-8
12.0	11.6	15.8	18.0	7	1-7	-7
10.0	9.6	13.8	16.0	6	1-6	-6
8.0	7.6	11.8	14.0	5	1-5	-5
6.0	5.6	9.8	-	4	1-4	-4
4.0	-	7.8	-	3	1-3	-3
2.0	-	5.8	-	2	1-292173-2	292173-2

STE TE Connectivity

SMT TYPE POST HDR ASS'Y (H)
 WITH BOSS & TAIL TYPE
 (TE CT CONN. 2mm PITCH)

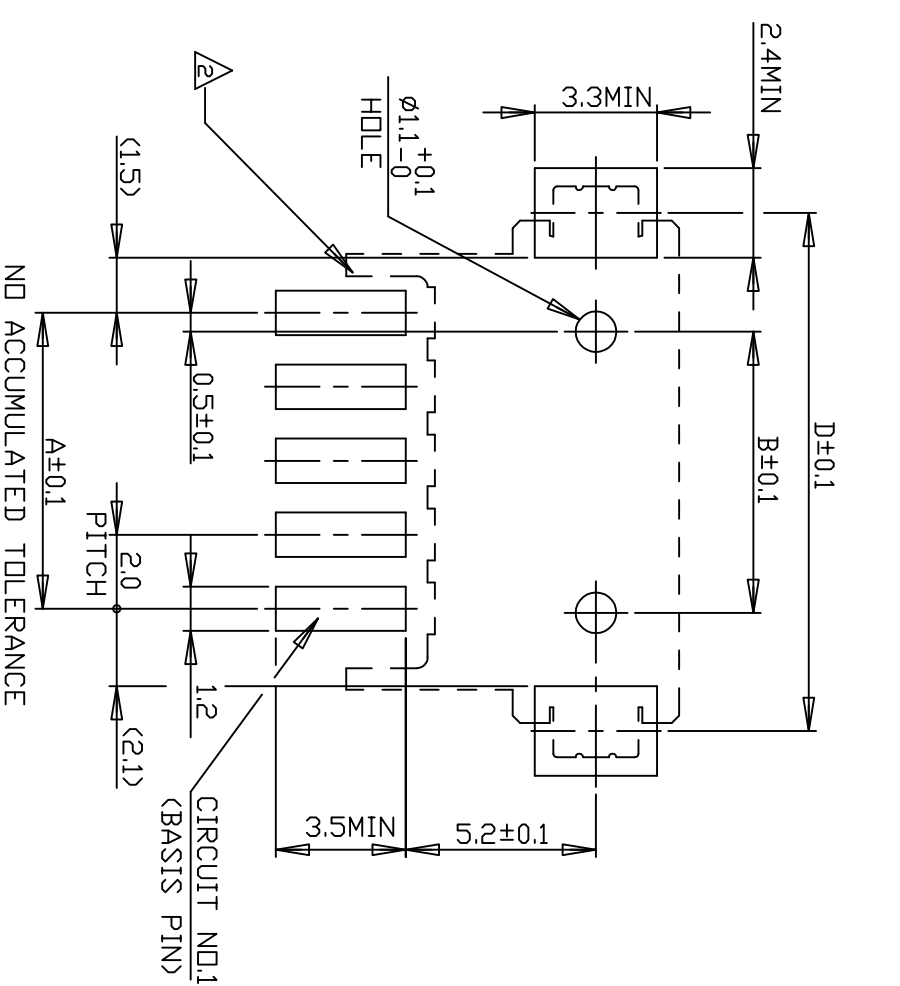
DMN	CHK	APVD	NAME	SIZE	CAGE CODE	DRAWING NO	RESTRICTED TO
-	-	-	108-60016	A3	00779	292173	-
DIMENSIONS: MM		TOLERANCES UNLESS OTHERWISE SPECIFIED:		PRODUCT SPEC		SCALE	
SEE NOTE		SEE NOTE		108-60016		5:1	
MATERIAL		FINISH		APPLICATION SPEC		SHEET	
SEE NOTE		4 P/C ANGLES		-		3 OF 6	
TOLERANCES UNLESS OTHERWISE SPECIFIED:		TOLERANCES UNLESS OTHERWISE SPECIFIED:		WEIGHT		REV	
10>* ±0.2		0 P/C ±		-		C3	
30>* >10 ±0.25		1 P/C ±		-			
100>* >30 ±0.3		2 P/C ±		-			
ANGEL ±3°		3 P/C ±		-			
		4 P/C ±		-			

TOLERANCES UNLESS OTHERWISE SPECIFIED:
 10>* ±0.2
 30>* >10 ±0.25
 100>* >30 ±0.3
 ANGEL ±3°

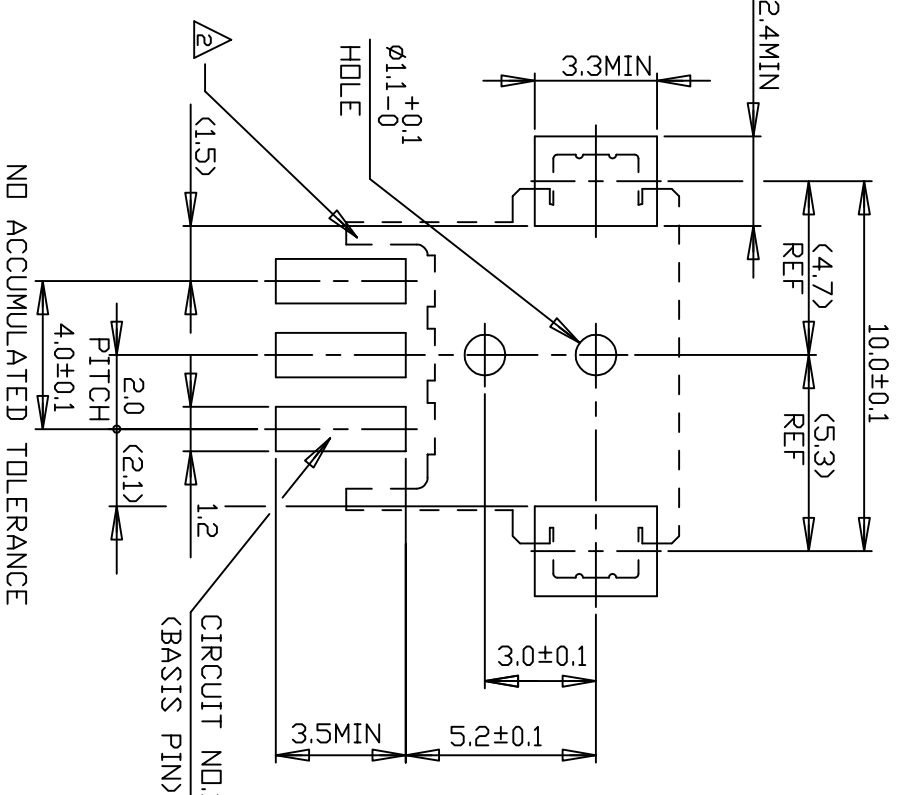


Loc	DIST	REVISIONS	DATE	DWN	APVD
ES	00				
P	LTR	DESCRIPTION			
-	-	SEE SHEET 1	-	-	-

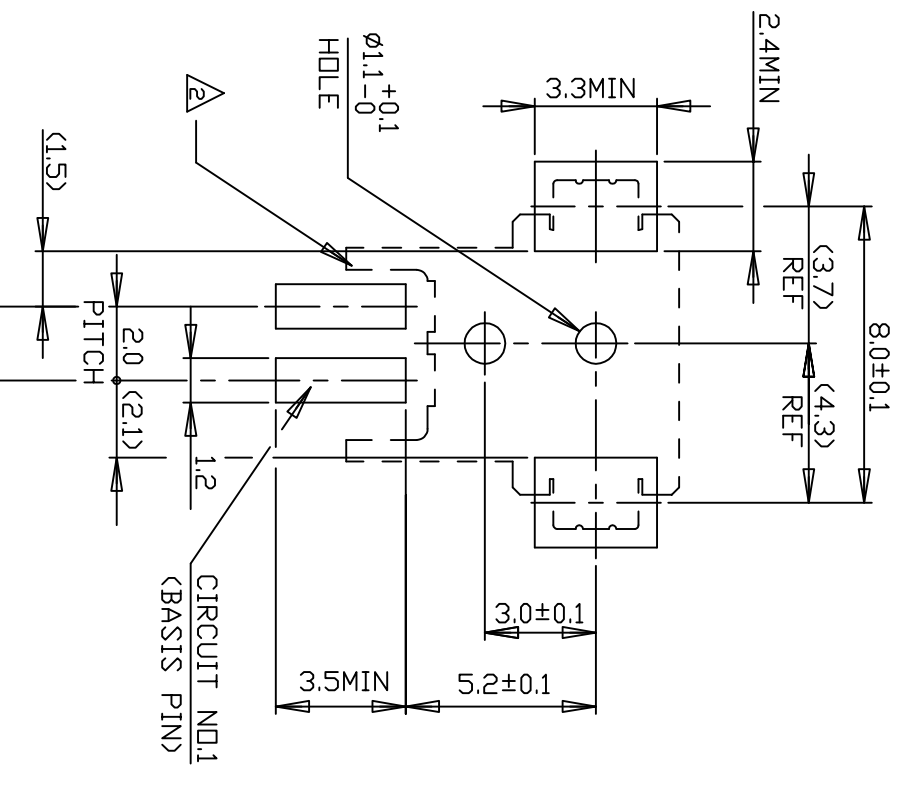
LAYOUT FOR 292173-X,1-292173-X



5 POS. & ABOVE POS.



3 POS.



2 POS.

RECOMMENDED P.C. BOARD LAYOUT
(P.C.B THK:0.8mm MIN)

THIS DRAWING IS A CONTROLLED DOCUMENT.

DWN	CHK	APVD	NAME
-	-	-	-

DIMENSIONS: MM

TOLERANCES UNLESS OTHERWISE SPECIFIED:	0 PLC	±
	1 PLC	±
	2 PLC	±
	3 PLC	±
	4. PRC ANGLES	±

PRODUCT SPEC

APPLICATION SPEC

WEIGHT

MATERIAL

FINISH

CUSTOMER DRAWING

SIZE A3

CAGE CODE 00779

DRAWING NO. 292173

SCALE 5:1

SHEET 4 OF 6

REV C3



SMT TYPE POST HDR ASS'Y (H)
WITH BOSS & TAIL TYPE
(TE CT CONN. 2mm PITCH)

LOC	DIST	P	LTR	DESCRIPTION	DATE	DWN	APVD
ES	00	-	-	SEE SHEET 1	-	-	-

REVISIONS

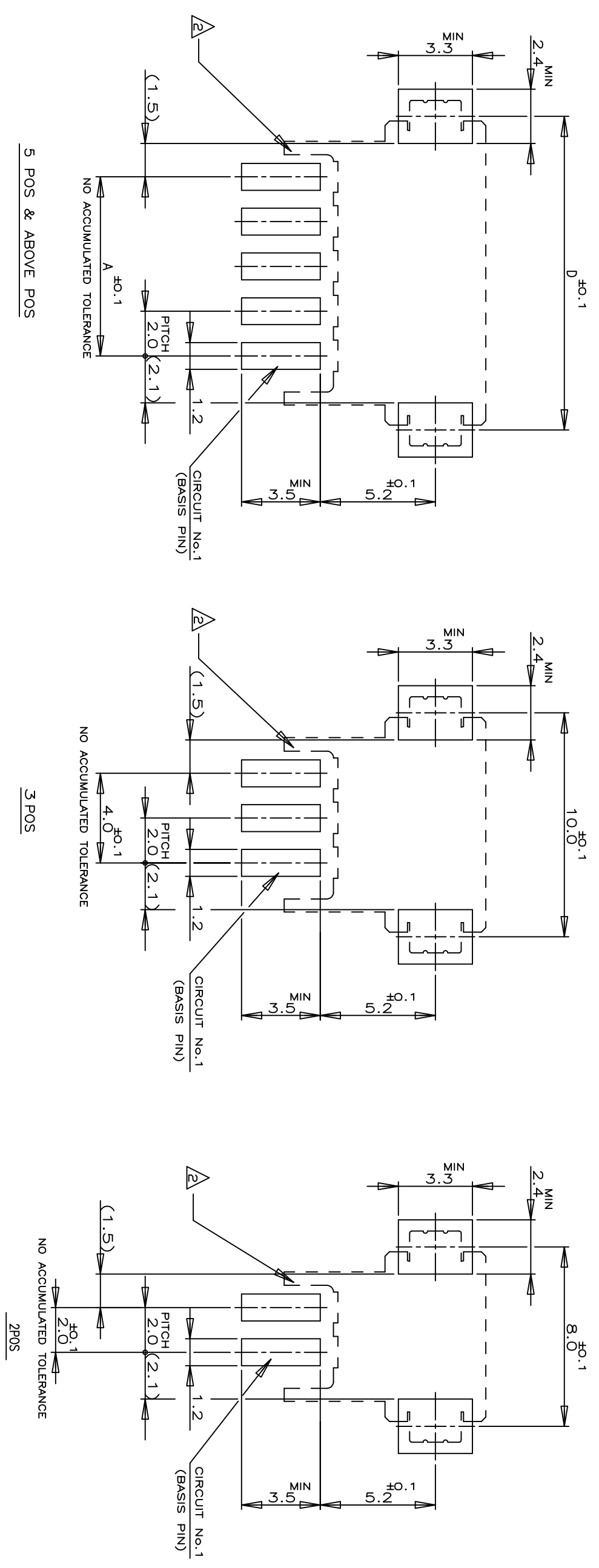
1

2

3

4

1



RECOMMENDED P.C.BOARD LAYOUT
(P.C.B THK:0.8mm MIN)

THIS DRAWING IS A CONTROLLED DOCUMENT.

DIMENSIONS: MM	TOLERANCES UNLESS OTHERWISE SPECIFIED:	DMN	NAME
	0 PLC ±	CHK	<p>TE Connectivity</p> <p>SMT TYPE POST HDR ASS'Y (H) W/O, WITH TAIL TYPE (TE CT CONN. 2mm PITCH)</p>
	1 PLC ±	APVD	
	2 PLC ±	PRODUCT SPEC	
	3 PLC ±	APPLICATION SPEC	
	4 P.C.B. ANGLES ±	FINISH	WEIGHT
MATERIAL			CUSTOMER DRAWING

SIZE A3 CAGE CODE 00779 DRAWING NO. 292173

SCALE 5:1 SHEET 6 OF 6 REV C3